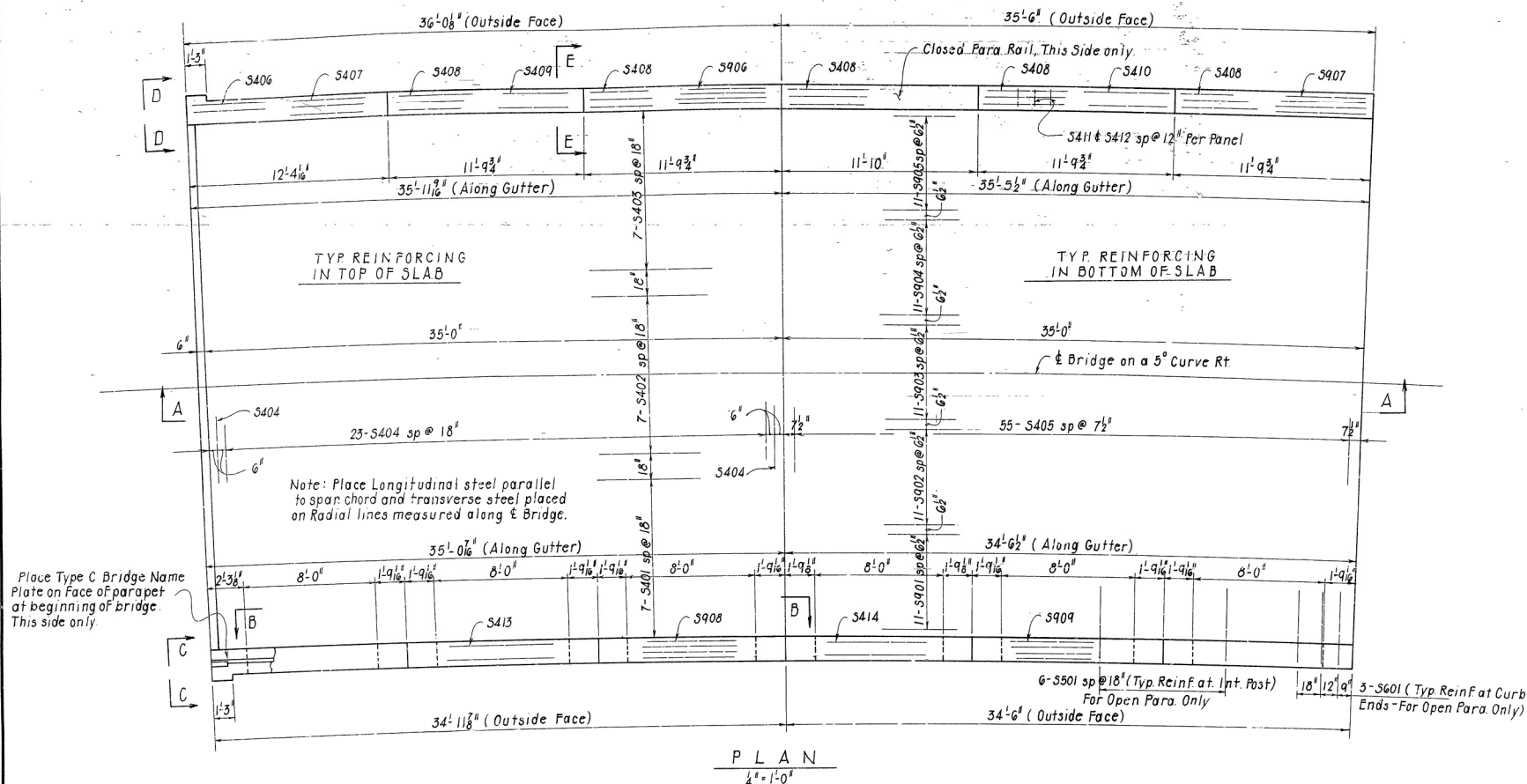


RETIRED	FILED	RETIRED	FILED	NO.	SHEET
				6	ARK.
				JOB NO.	5812-11 30
				6036	SPAN 26334 A



GENERAL NOTES

ALL CONCRETE TO BE CLASS S(AE). ALL EXPOSED CORNERS TO BE CHAMFERED 3/4" UNLESS OTHERWISE NOTED.

REINFORCING STEEL TO BE ASTM A615 OR A617, GRADE 60.

BAR SUPPORTS FOR REINFORCING BARS WILL NOT BE PAID FOR DIRECTLY, BUT WILL BE CONSIDERED SUBSIDIARY TO THE ITEM "REINFORCING STEEL."

ROOFING FELT, BITUMINOUS FELT, PREFORMED JOINT, STRUCTURAL STEEL, AND POURED SYNTHETIC POLYMER JOINTS SHALL BE MEASURED AND PAID FOR AS CLASS S OR S(AE) CONCRETE.

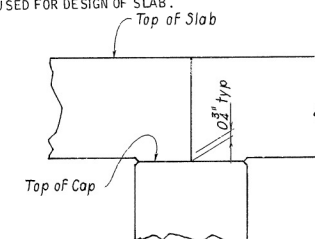
SPECIFICATIONS: ARKANSAS STATE HIGHWAY COMMISSION STANDARD SPECIFICATIONS FOR HIGHWAY CONSTRUCTION, EDITION OF 1978 AND APPLICABLE SPECIAL PROVISIONS.

DESIGN SPECIFICATIONS: AASHTO 1977 AND INTERIMS.

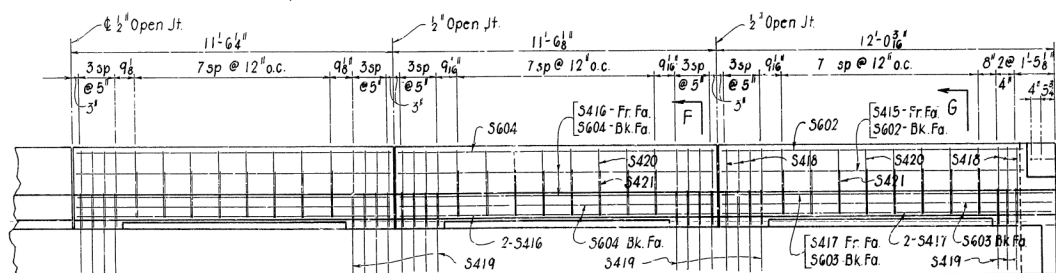
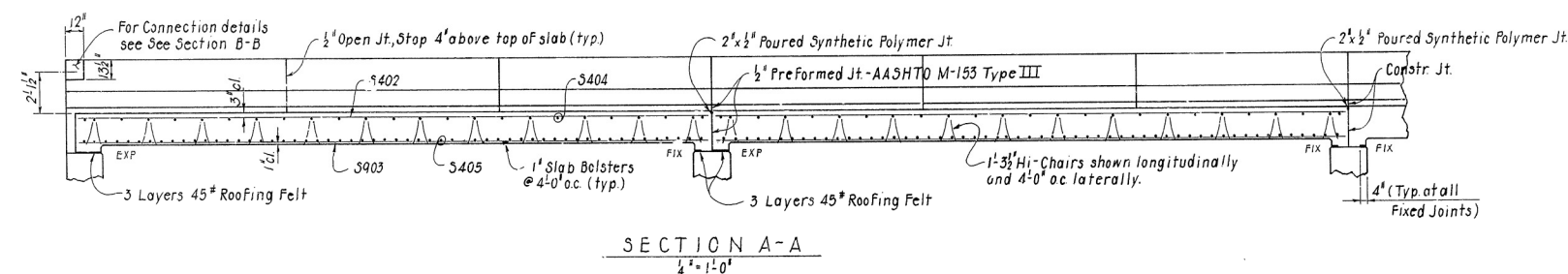
DESIGN LIVE LOADING: HS20

LOAD DISTRIBUTION TO SLAB: DEAD LOAD - 286 PSF; LIVE LOAD - 0.166 WHEELS/FT. OF WIDTH PLUS 30% IMPACT.

UNIT STRESSES: COMPRESSIVE STRENGTH OF CLASS S OR S(AE) CONCRETE = 3500 PSI  
YIELD STRENGTH OF REINFORCEMENT = 60,000 PSI  
LOAD FACTOR USED FOR DESIGN OF SLAB .



R I S E R D E T A I L  
N.T.S

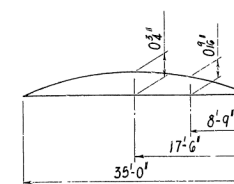


TYP. INTERIOR PANEL

TYP. END PANEL

4 Bolt Holes for  $\frac{3}{4}$ " x 8" Galvanized bolts with  $\frac{1}{4}$ " threaded. (Non-Pay Item, Subsidiary to other items.)

Note: See dwg. GR-8A for  
Guard Rail Connection  
Details.



D.L. CAMBER DIAGRAM  
N.T.S

SHEET 1 OF 2

DETAILS OF 35'-0" R.C. SLAB SPAN  
OVERFLOW CREEK  
WHITE COUNTY

**ROUTE 258 SEC. 1**  
**ARKANSAS STATE HIGHWAY COMMISSION**  
**LITTLE ROCK, ARK.**

DRAWN BY: L.M. DATE: 10-27-83  
CHECKED BY: HLD DATE: 11-8-83 SCALE: As Shown

DESIGNED BY: D.H.P. DATE: 10-19-82

SCALE: As Shown

DRAWING NO. 26334